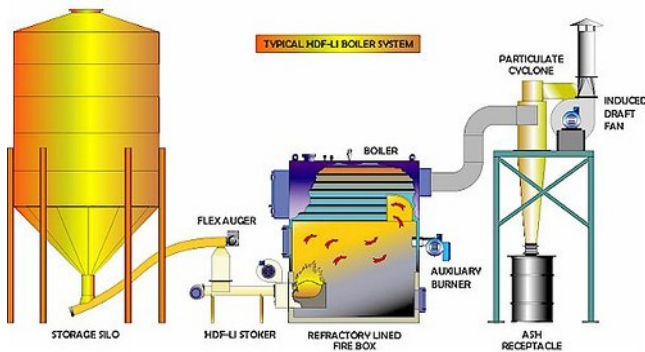


## Wood Pellet Boilers/Furnaces

- Automated Operation
- Electronic Control & Monitoring
- High Efficiency
- Low Maintenance

A typical wood pellet heating system includes fuel storage, boiler, and ash handling systems. The burner receives fuel from the storage bin through a fuel conveyer. The supplied burner combusts pelletized fuel which heats the water for distribution throughout the facility.



Commercial scale installations include automated soot blowing for boiler tube cleaning, emissions control for fly ash (particulate) removal, and automated ash handling systems to remove and store the ash.



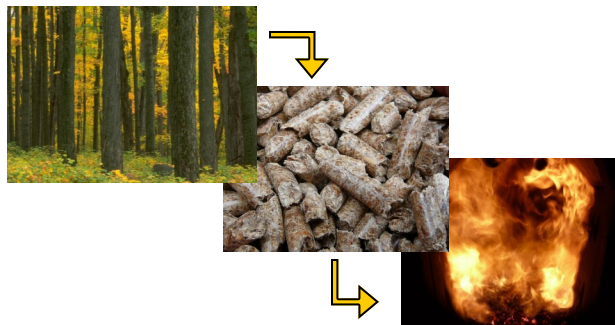
## About our President:

Averill H Cook, a graduate of the University of Vermont, received his degree in Environmental Studies in the School of Natural Resources. Mr. Cook has served two terms as president of the Pellet Fuels Institute. His extensive travels through Scandinavian countries, Europe and South America evaluating the pellet industry, enabled him to pioneer a new pelleting technology. Averill currently involved in developing pellet manufacturing projects in the US and Europe.



## About the Company:

Founded in 2006, Biomass Commodities Corporation is a vertically integrated renewable energy provider. Charlie Agnew who manages the pellet heating division of BCC, is currently engaged in projects throughout New England and New York. BCC provides boiler installation and after sale service contracts. BCC maintains strategic partnerships with pellet manufacturers throughout North America, and boiler manufacturers SolaGen Inc., D'Alessandro Termomeccanica of Italy, and AbioNova of Sweden.



## Biomass Commodities Corporation



**Energy. Efficiency. Security.**

Investing in tomorrow's carbon neutral locally produced heating fuel:

## WOOD PELLETS



### CONTACT US TODAY!

Site Visit Audits, Payback Analysis, Heating System Design, Boiler Installation, Support and Training, Bulk Fuel Delivery, Service & Maintenance, for Commercial, Institutional & Residential Applications

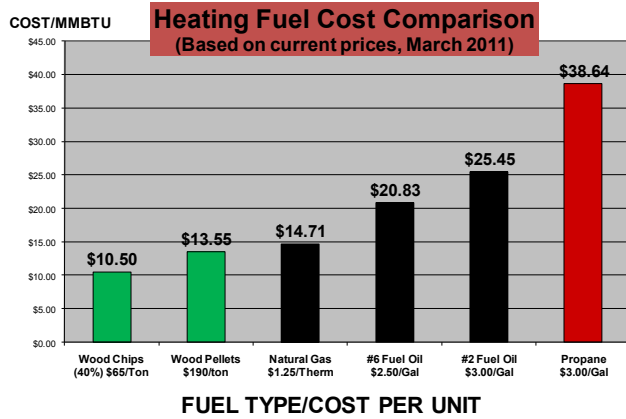
**Williamstown MA • 413-458-8275**  
**Portland ME • 207-576-3490**  
**info@biomasscommodities.com**  
**www.biomasscommodities.com**

### Site Visit Analysis:

BCC completes an analysis of the existing building and site to establish basic equipment and fuel storage layout requirements for system installation. BCC may then work with partnering architectural and engineering firms to complete the design stage.

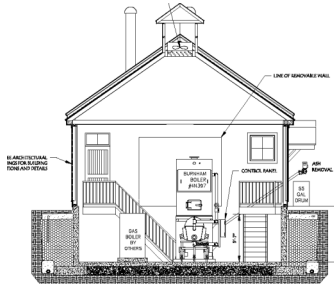
### Payback Analysis:

Given different project parameters and assumptions, BCC is able to determine project's cost comparison and payback period.



### Heating System Design:

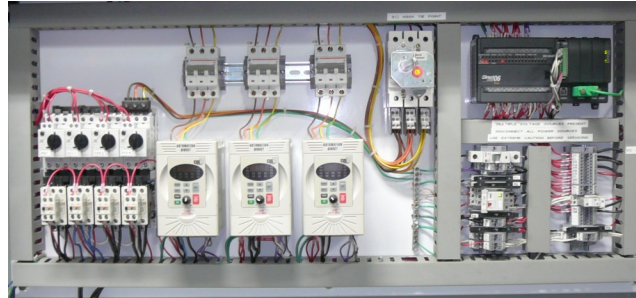
Using CADD (computer aided drafting and design) BCC has the ability to incorporate our systems into the architect's/engineer's plans.



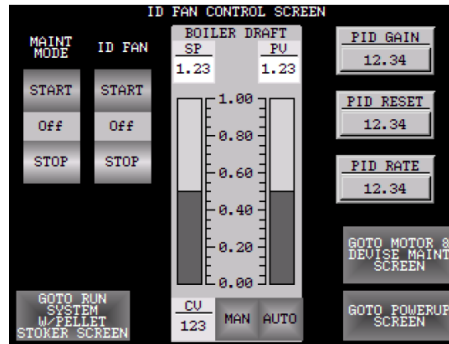
This service allows the customer, their engineer and architect, to gain a clear understanding of how BCC's system will fit into their application. Additionally, providing these drawings to sub-contractors and BCC's installation team makes for a smooth installation process.

### System Installation:

BCC's trained staff not only manages client's installations but provides placement services for the equipment. BCC's active involvement ensures a smooth construction process through to completion.



It is important to note that BCC provides operational training before, during and after every equipment installation. Before installation, BCC can provide Power Point based training material that simulates the controls and actual touch screen interface to be installed.



During installation, operators become familiar with every component of the system from pellet storage through ash removal, including combustion efficiency, flame recognition and steps to improve performance. Once running, BCC provides a check sheet of essential maintenance tasks and troubleshooting techniques to ensure a full understanding of the system.

### Bulk Fuel Delivery:



BCC's familiarity with fuel types and suppliers allows us to assist our customers in negotiating value minded fuel supply contracts considering both quality and cost.



### Service & Maintenance:

BCC offers maintenance contracts and 24-hour emergency service calls for complete and convenient service. Contract offerings range from a single annual service visit to full pellet plant operation.

SolaGen HDF-WC Pellet Boiler  
Service Inspection Checklist



227 Adams Road  
Williamstown, MA 01267  
Office (413) 458- 5326  
info@biomasscommodities.com

Date: 11/14/09  
Completed by: Charlie Agnew  
Boiler: WFBIS Smith/AS

| Safeties                         | Tested, OK                          | Notes: |
|----------------------------------|-------------------------------------|--------|
| LWCO                             | <input checked="" type="checkbox"/> |        |
| Pump Control                     | <input checked="" type="checkbox"/> |        |
| Slow Drain Test, Boiler Shutdown | <input checked="" type="checkbox"/> |        |
| Stoker Auger Fail Shutdown       | <input checked="" type="checkbox"/> |        |
| Burnback Shutdown                | <input checked="" type="checkbox"/> |        |
| Water Deluge                     | <input checked="" type="checkbox"/> |        |
| Circ Pump Fail/Flow Proof        | <input checked="" type="checkbox"/> |        |
| Draft Failure                    | <input checked="" type="checkbox"/> |        |

Notes: Newly installed, tested OK